



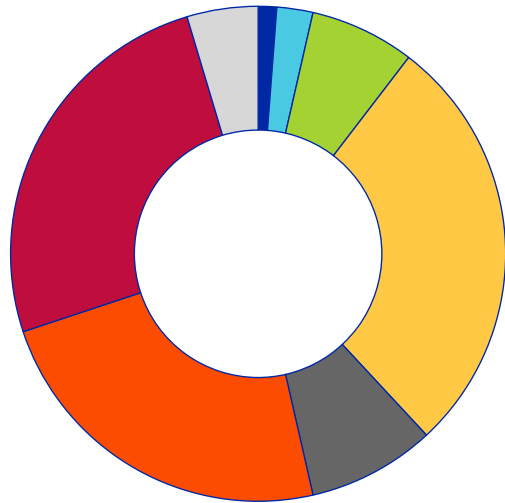
# Promotion of Early Career Researchers at UZH

Dr. Claudine Leysinger  
14. November 2023

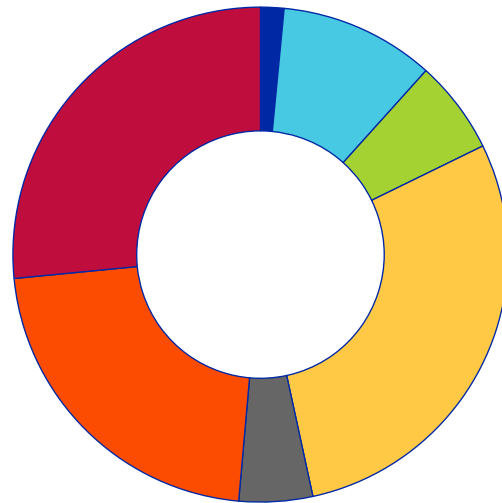
Focus on  
Postdocs

GRC

# PhDs and Postdocs at UZH (2022)



Postdocs: 1 402



PhDs: 5 618

Faculty	% ECRs	Postdocs	PhDs
ThF Faculty of Theology	1,5 %	17	86
RWF Faculty of Law	8,6 %	33	569
WWF Faculty of Business, Econ. & Informatics	6,2 %	96	343
MeF Faculty of Medicine	28,6 %	388	1 620
VSF Faculty of Veterinarian Med.	5,5 %	117	270
PhF Faculty of Arts and Social Sciences	22,3 %	329	1 239
MNF Faculty of Science	26,3 %	357	1 491
Div. Strategic Programs	5 %	65	–

# Graduate Campus at a glance

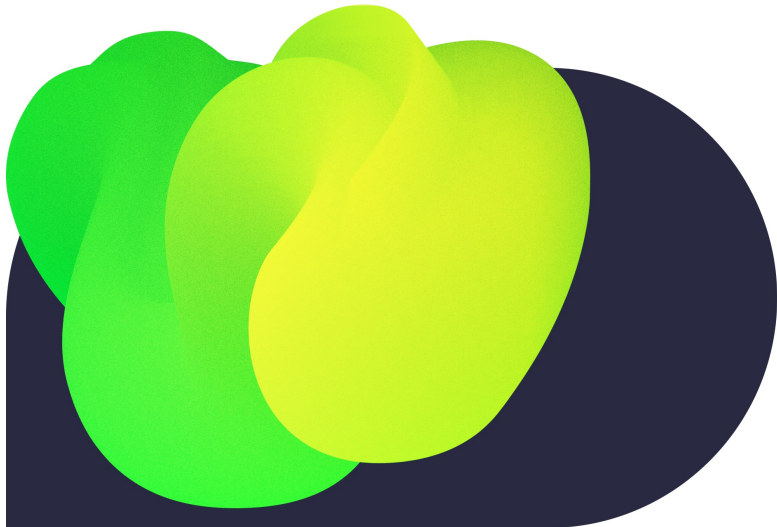


Cross-faculty offerings to support early career researchers, with a focus on postdocs:

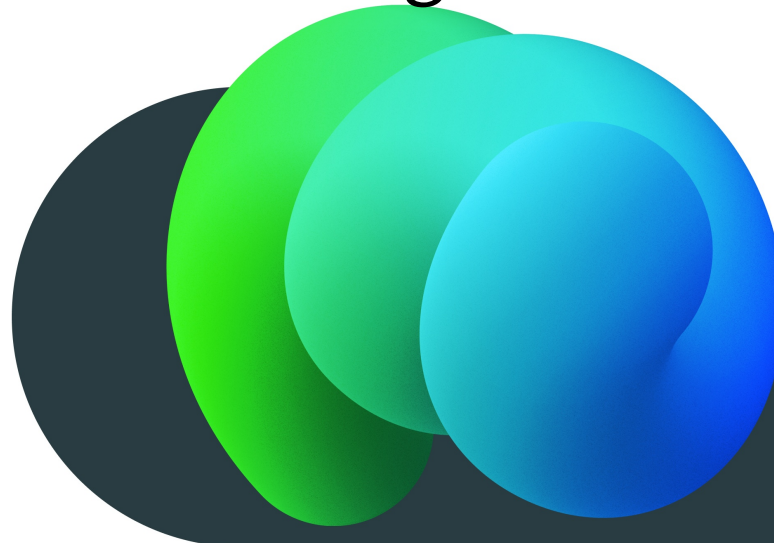
- Awarding **grants**, honoring special achievements, and offering a wide range of courses in **transferable skills**
- Individual **counseling**, coaching and networking programs to promote career development
- **Orientation** through tailored information transfer in events and via digital communication channels

# Graduate Campus offerings

Skills



Counseling

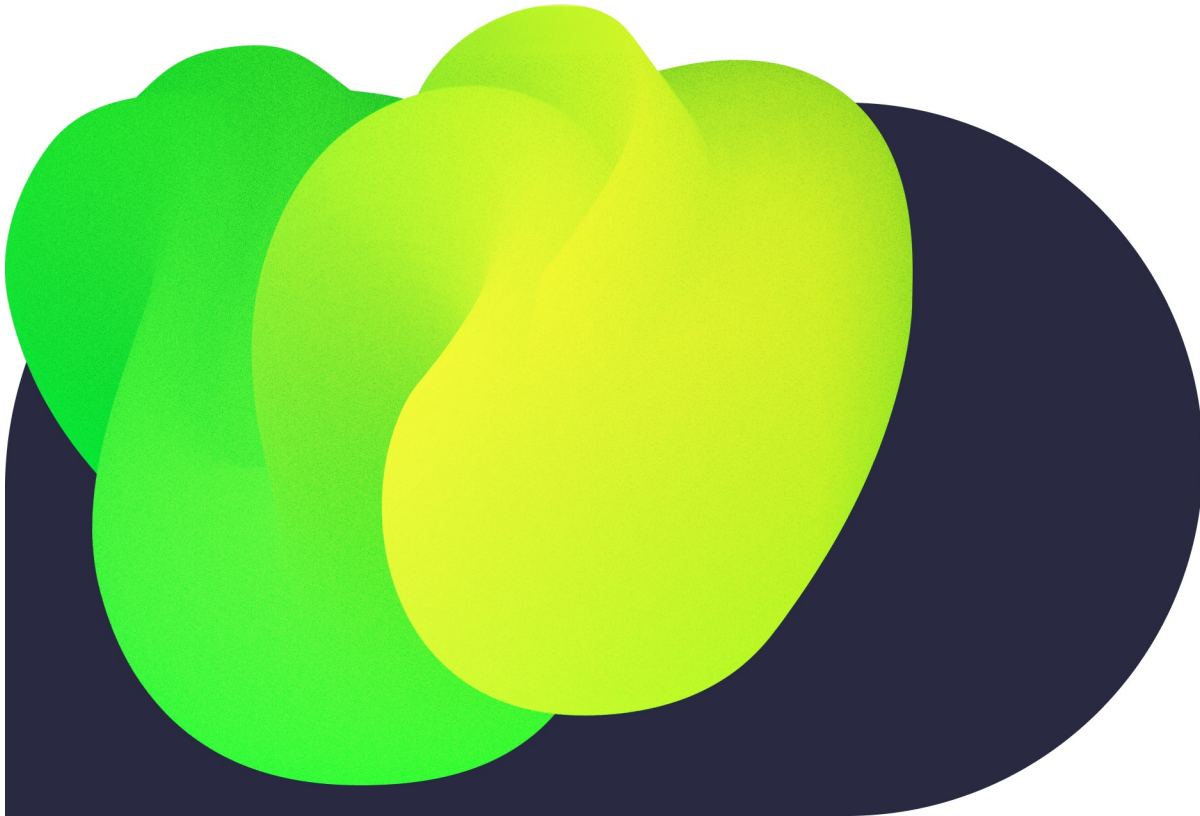


Funding



[grc.uzh.ch](https://grc.uzh.ch)

# Transferable Skills



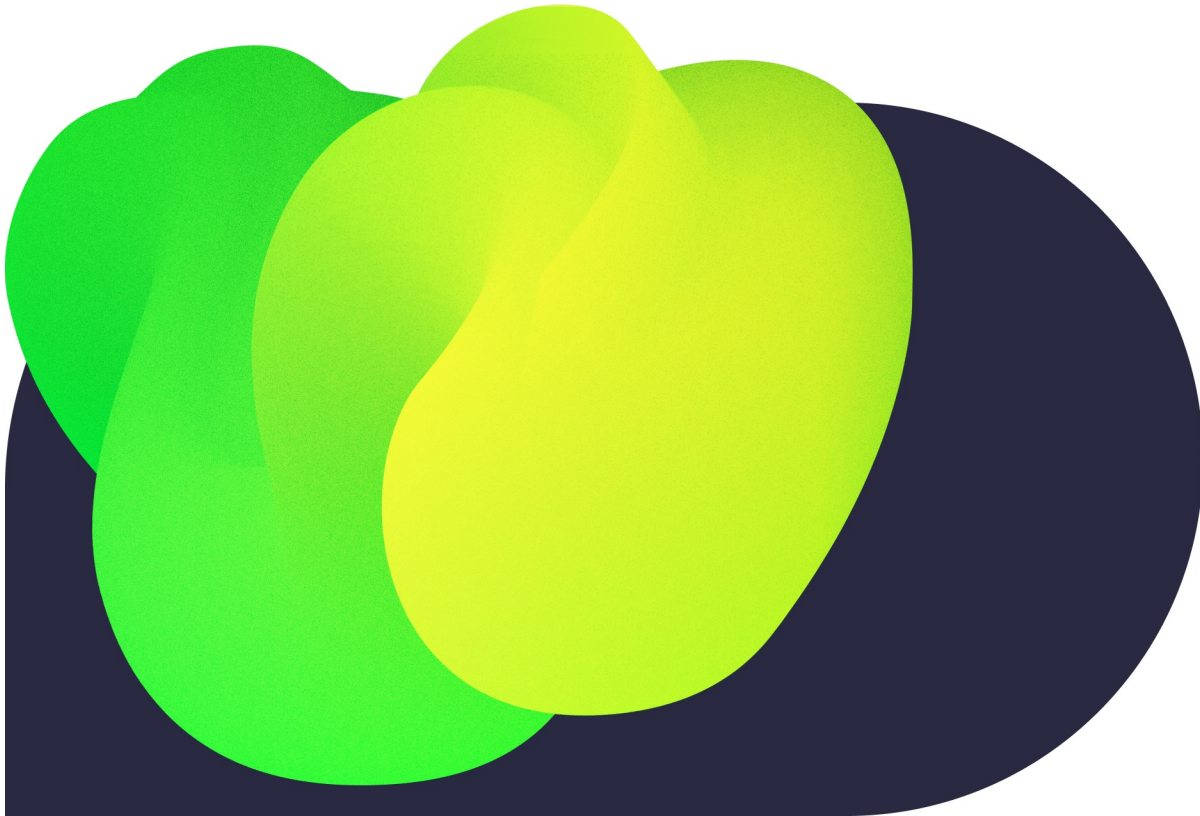
Courses in transferable Skills for PhDs and Postdocs

---



Summer Schools:  
Citizen Science / Open Science

# Transferable Skills



## Focus:

- Career & self-management
- Leadership & collaboration
- Academic skills & storytelling
- Writing support
- Mindfulness

New course offerings every semester

# PhD course program spring 2024 1/2

- Voice training and public speaking skills
- Project management for PhD candidates
- Narration and storytelling for persuasive academic presentations
- Resilience and wellbeing in academia
- Verhandlungs- und Moderationstechniken
- Fit für die Karriere
- Leadership skills for doctoral candidates
- Auftrittskompetenz und Körpersprache
- Storyboarding as a research tool
- Scientific poster design
- Good research practice
- How to give a presentation effectively and persuasively
- Resource-focused stress management
- Publish or perish: Designing research for publication

# PhD course program spring 2024 2/2

- Improvisation skills for researchers
- Wirtschafts-Know-how
- Mind & meditation
- Open Up and Share: Publications, Data, Impact
- Design your data management plan for the SNSF
- Negotiating successfully to a win-win result
- Storytelling skills for science communication and persuasion
- Collaborating with emotional intelligence
- Ethics training
- Exploring AI for Science Communication

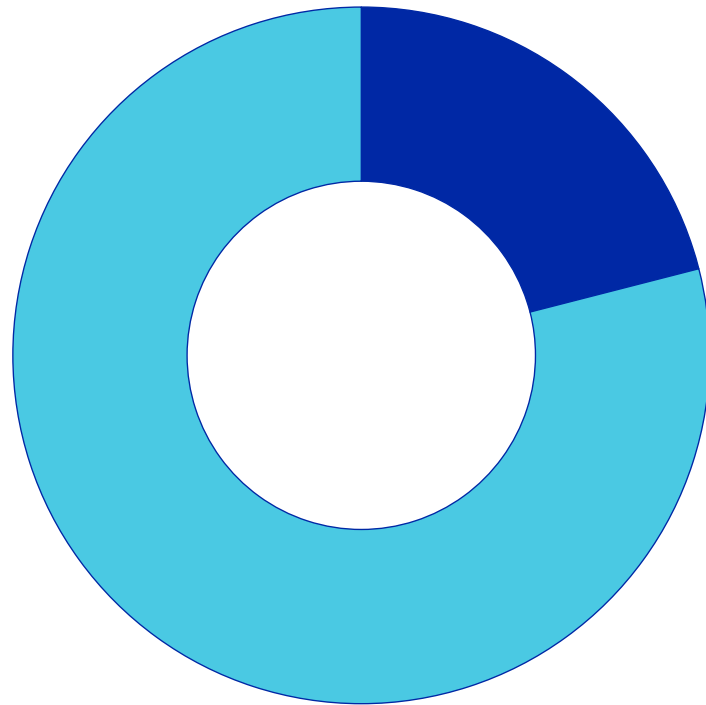
List of courses can be found in [VVZ](#)

To enroll, you need to go via SAP Modulbuchung

Enrollment starts around mid-January 2024



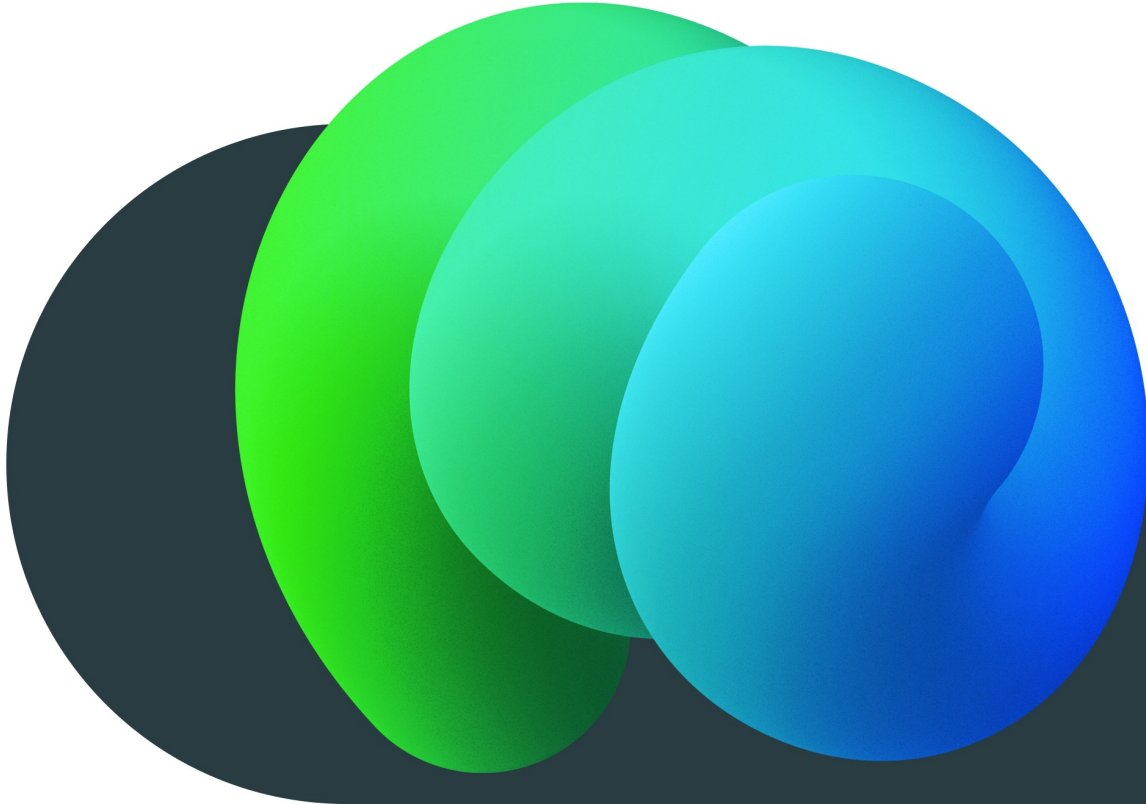
# Participants according to Faculty (2022)



■ Postdocs 21 %  
■ PhDs 79 %

Faculty	Postdocs	PhDs
<b>ThF</b> Faculty of Theology	2,3 %	3,4 %
<b>RWF</b> Faculty of Law	3,8 %	3,6 %
<b>WWF</b> Faculty of Business, Econ. & Law	3 %	6,7 %
<b>MeF</b> Faculty of Medicine	20,5 %	8,4 %
<b>VSF</b> Faculty of Veterinarian Medicine	2,3 %	2,5 %
<b>PhF</b> Faculty of Arts & Social Sciences	31,7 %	32,7 %
<b>MNF</b> Faculty of Science	36,4 %	42,7 %

# Counseling

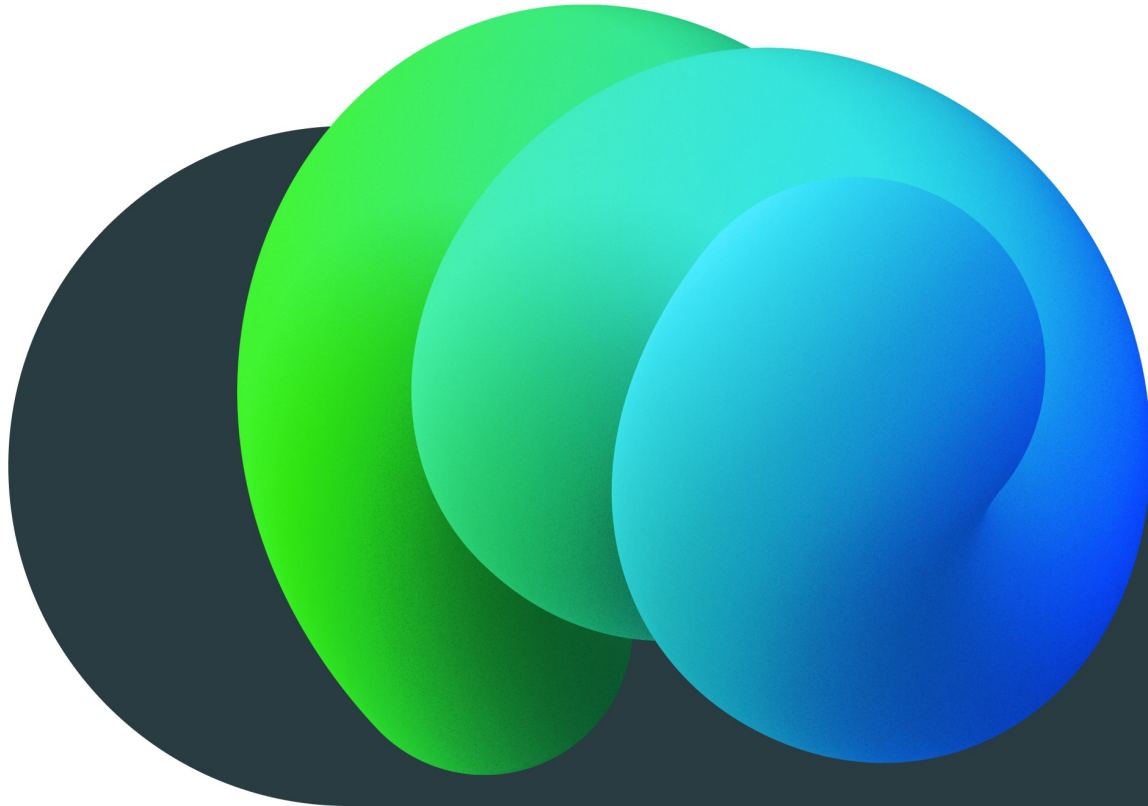


Individual counseling and coaching  
for issues related to the qualification  
phase

---

Events for tailored information  
transfer and networking programs

# Counseling



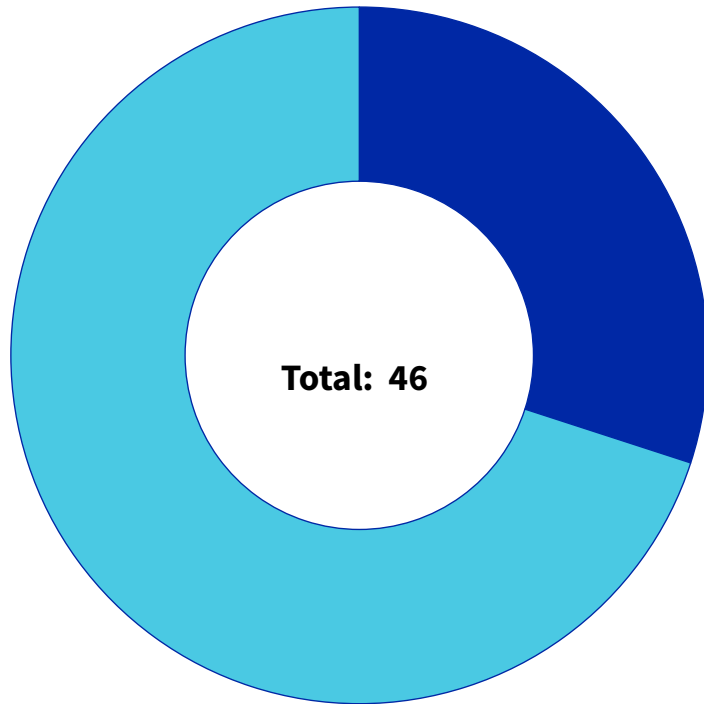
## Event series:

- Onboarding Postdocs
- Postdoc Meet Up
- Postdoc Jobworld
- Mittelbaufest



Ads via Twitter, LinkedIn,  
Newsletter

# Coachees according to Faculty (2022)

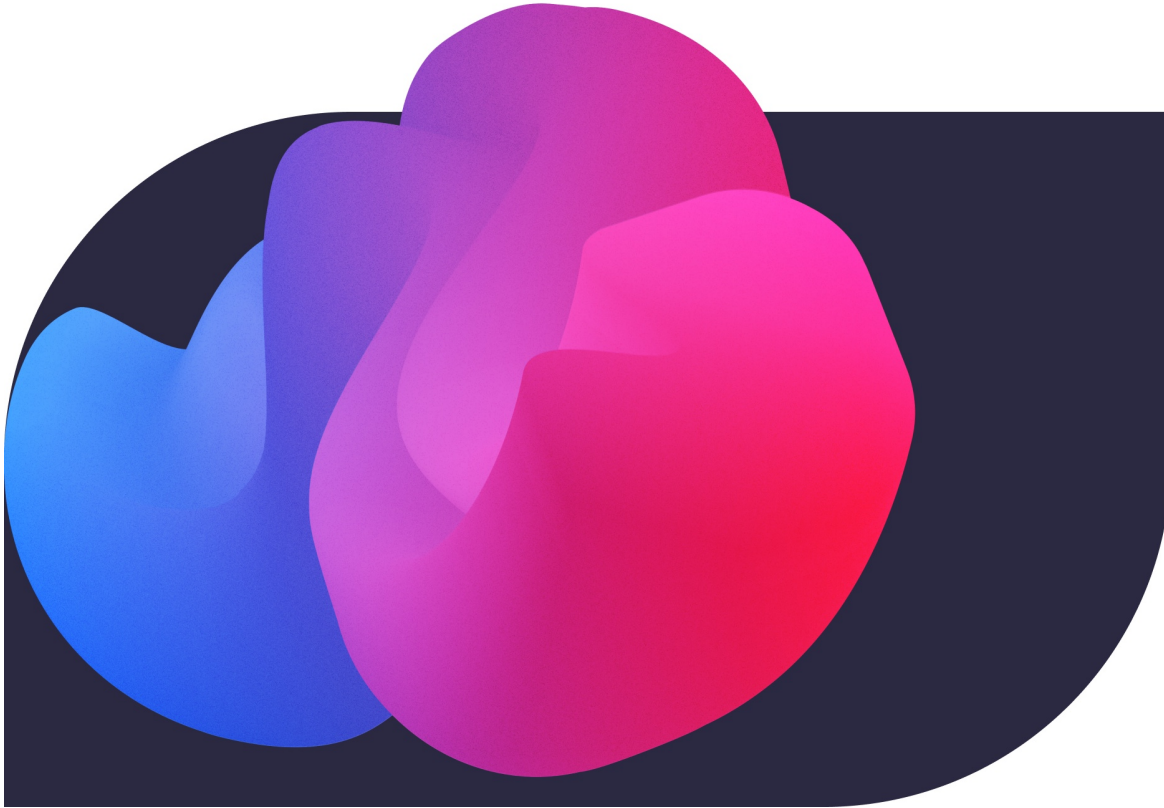


■ Postdocs 27 %  
■ PhDs 63 %

## Faculty

<b>ThF</b>	Faculty of Theology	<b>7 %</b>
<b>RWF</b>	Faculty of Law	<b>4 %</b>
<b>WWF</b>	Faculty of Business, Econ. & Law	<b>7 %</b>
<b>MeF</b>	Faculty of Medicine	<b>13 %</b>
<b>VSF</b>	Faculty of Veterinarian Medicine	<b>—</b>
<b>PhF</b>	Faculty of Arts & Social Sciences	<b>52 %</b>
<b>MNF</b>	Faculty of Science	<b>17 %</b>

# Funding



GRC Career Grant,  
Short Grant, Travel Grant,  
VAUZ Meeting Fund

---

Mentoring Awards, FAN Awards, 3MT

---

International networking:  
ESOF, U21, LERU

Focus on  
Postdocs

# Funding



Support of individual projects:

GRC Career Grants

CHF 5'000 – 15'000 | twice per year

GRC Short Grants

CHF 1'000 – 5'000 | continuously

Support of stays/travels:

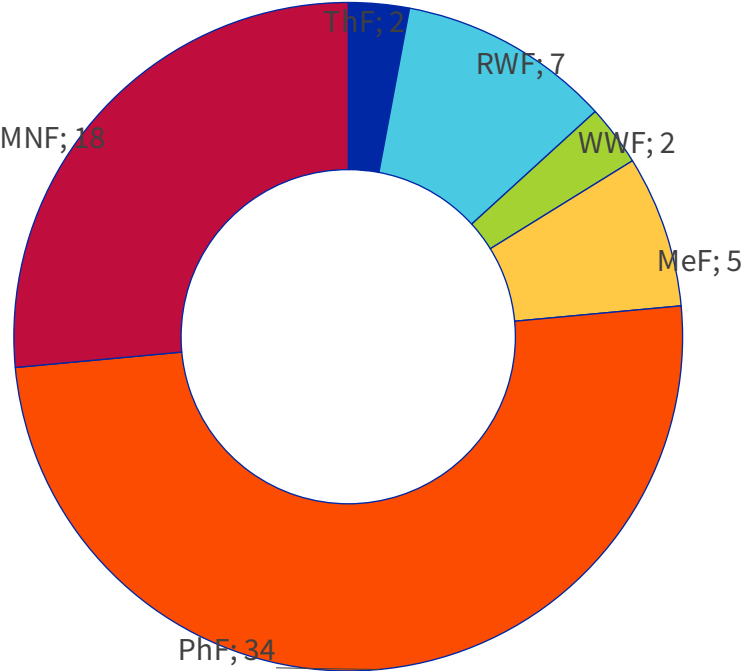
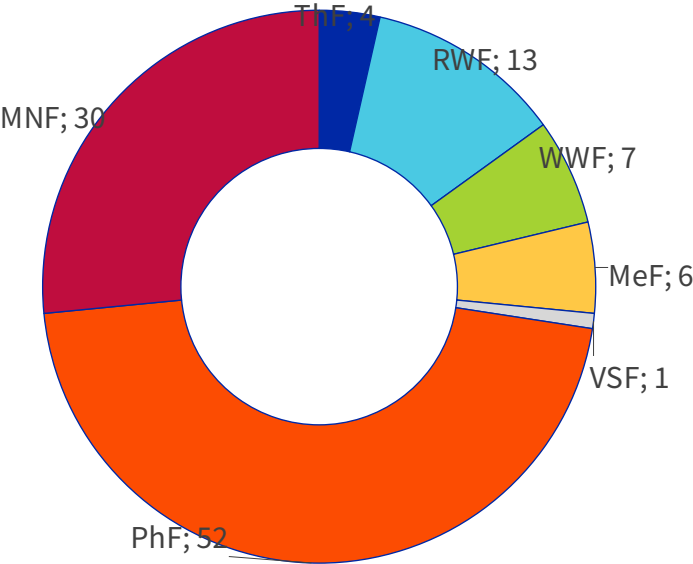
GRC Travel Grants

max. CHF 4'600 | twice per year

# Number of ECRs / Faculty GRC Travel Grants (2022)

GRC Travel Grants applied for: 113

Funded applications : 68  
 Funding volume of total: CHF 145'271  
 Success rate: 60.2 %

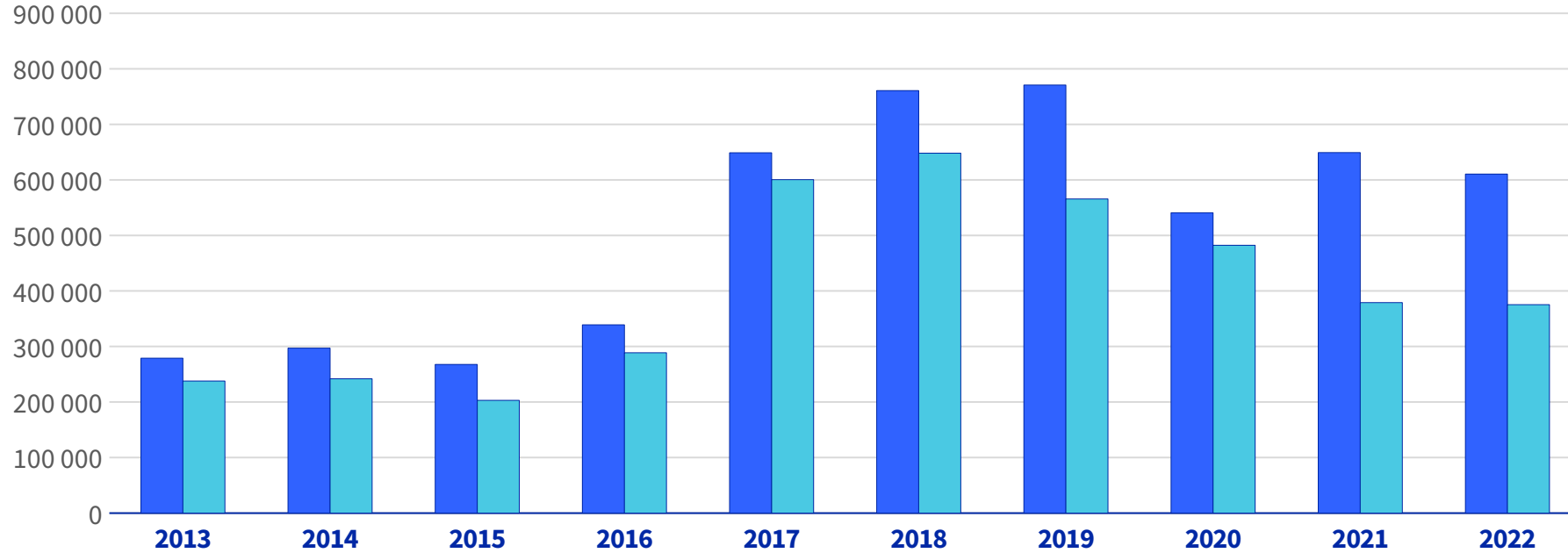


# Overview Allocation (2022)

Overview 2022	Allocation	Maximum Funding	Funds granted
<b>GRC Grants</b>			
Individual applications	2x per year	CHF 4 000 – 10 000	<b>CHF 130 899</b>
<b>GRC Short Grants</b>			
Individual applications	continuous	max. CHF 4 000	<b>CHF 49 835</b>
<b>GRC Travel Grants</b>			
Short research stays/ travels	2x per year		<b>CHF 145 271</b>
<b>GRC Peer Mentoring Grants</b>			
Support of peer mentoring groups	1x per year	max. CHF 10 000	<b>CHF 49 222</b>



# Development of Applications and Allocation (2022)



**Funds applied for**  
in CHF

278 904    297 091    267 675    339 007    648 790    760 788    770 823    540 805    649 233    610 436

**Funds granted**  
in CHF

237 734    241 901    202 962    288 617    600 416    648 080    565 678    482 347    379 016    375 227



Focus on  
Postdocs

GRC